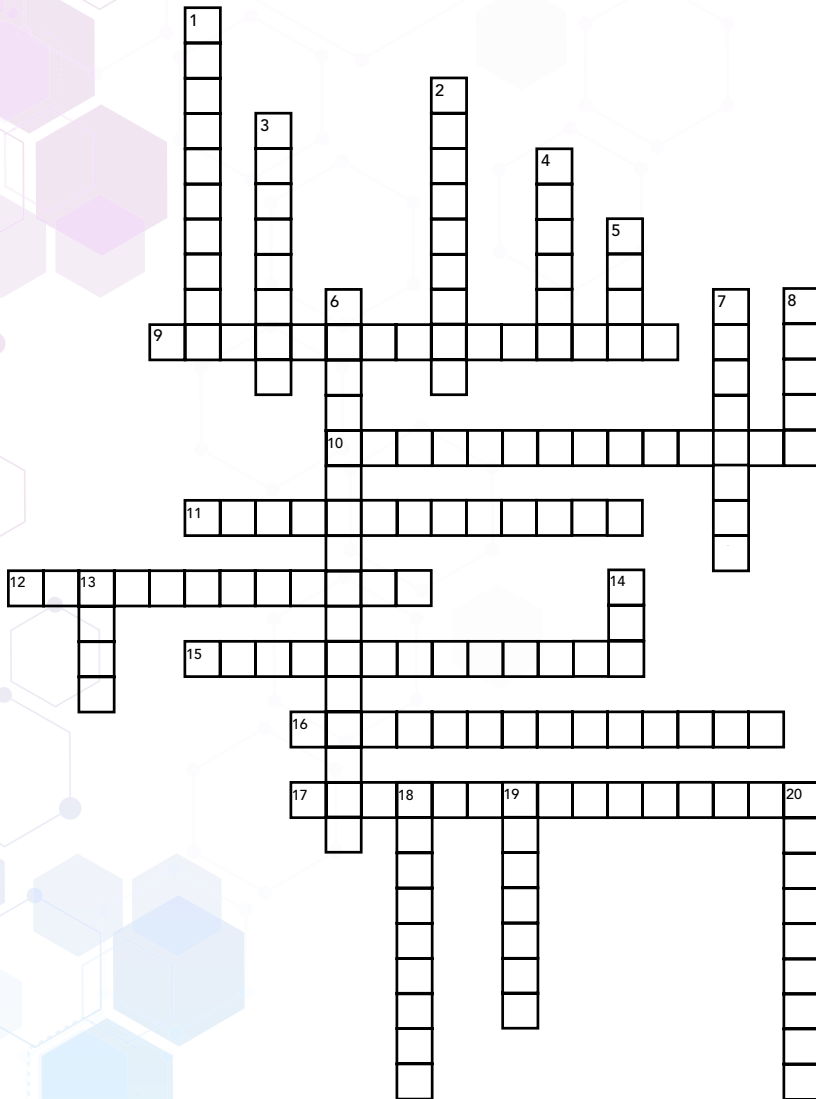


TEST YOUR KNOWLEDGE ON HORMONE HEALTH



Across:

9. When the pituitary gland doesn't make enough of certain hormones, you may have _____ (also called pituitary insufficiency).
10. Kidneys produce this hormone to stimulate production and maintenance of red blood cells.
11. This autoimmune condition can occur at any age with any gender, and is the most common cause of hyperthyroidism.
12. The part of the brain that produces gonadotropin during puberty.
15. The fats in the blood that are an important source of energy.
16. The largest endocrine-related organ system in the body.
17. Physical and mental change that result in having too much cortisol in the blood for a long period of time is known as _____.

Down:

1. Too much production of growth hormone in the blood can lead to _____.
2. Surgery that can limit how much calories and nutrients the body can absorb.
3. A steroid hormone produced in the adrenal glands that is linked to stress.
4. An enlarged thyroid gland, most common in women often showing no symptoms.
5. Substances in the environment, food, and personal care products that can interfere with normal function of the endocrine system.
6. A common disease resulting from the body's inability to use blood glucose for energy.
7. The most common type of cancer among men that grows very slowly, requiring regular surveillance.
8. This gender is most commonly diagnosed with osteoporosis?
13. A common hormonal disorder affecting 7-10% of women during reproductive age.
14. This rare disease prevents the body from breaking down fats and is typically a genetic disorder passed down from parents.
18. An excessive growth of "male" pattern hair on a woman's body.
19. This hormone stimulates the release of gastric acid, which breaks down the proteins in the food you eat.
20. A hormone that promotes feminine physical changes in transgender patients.

The Hormone Health Network is your trusted source for endocrine patient education. Visit hormone.org today!







Patients Have Questions. We Have Answers.

The Hormone Health Network

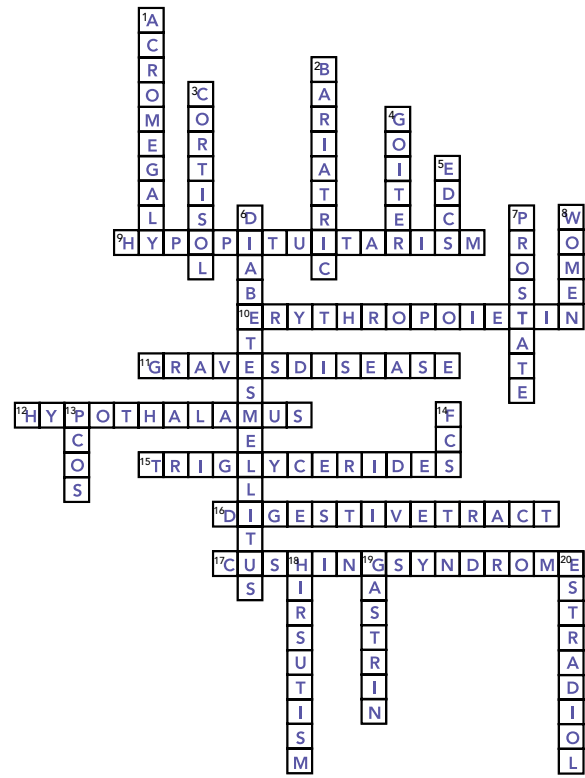
is the patient education affiliate of the Endocrine Society.

Our mission is to positively impact the health and well-being of patients and the public by translating the science of endocrinology. Our educational resources are based on the most advanced clinical and scientific expertise of the top endocrinologist around the globe.

Hormone.org is home to:

-  Multi-lingual Fact Sheets
-  Patient Guides
-  Educational Videos
-  Infographics
-  Find an Endocrinologist: a physician referral directory comprised over of 6,000 Society members.
-  Hormone Headlines: a free monthly email publication for patients and health care providers to serve as an additional way to learn more about hormone health.

We are committed to helping patients have informed decisions with you; their healthcare providers by moving them educated to engaged and from informed to active partners in their health care.



Crossword Puzzle Answer

Across:

9. Hypopituitarism
10. Erythropoietin
11. Graves' Disease
12. Hypothalamus
15. Triglycerides
16. Digestive Tract
17. Cushing Syndrome

Down:

1. Acromegaly
2. Bariatric
3. Cortisol
4. Goiter
5. EDCs
6. Diabetes Mellitus
7. Prostate
8. Women
13. PCOS
14. FCS
18. Hirsutism
19. Gastrin
20. Estradiol

FIND US

-  @HormoneHealthN
-  HormoneHealthNetwork
-  @HormoneHealthNetwork
-  HormoneHealthN

The Hormone Health Network is your trusted source for endocrine patient education.

Visit hormone.org today!

